

**Shandon Finesse®
Microtome Series**



- Features models ranging from fully automated to precision manual.
- Ergonomic design
- Cuts wax or resin
- Safe precision cutting
- High-quality sections

Shandon Finesse® ME +

The motorized electronic microtome designed to be the perfect fit.

Design and build products that meet our customers' needs – that's the simple commitment that Thermo Electron Corporation has used as the basis for design and manufacture of all Anatomical Pathology products. With the introduction of the new Shandon Finesse+ Series microtomes, that commitment is evident from top to bottom.

From the ergonomically correct design that improves functionality and efficiency, to the completely new blade holder with built-in features that will increase the quality of sectioning and laboratory productivity, it's easy to see why the Shandon Finesse+ Series from Thermo Electron Corporation is built to meet your laboratory's needs.

Shandon Finesse+ is designed to be the perfect fit for your lab.



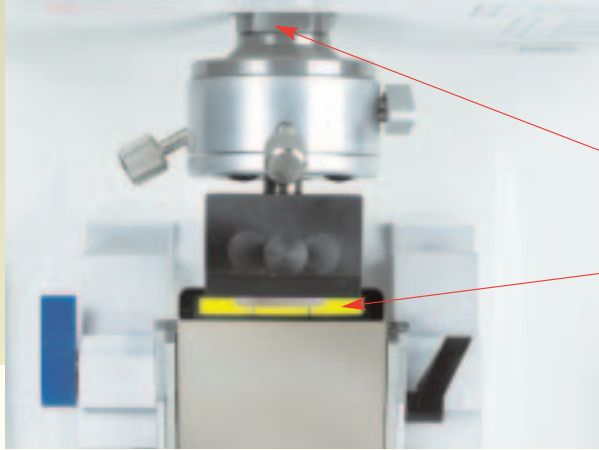
The Shandon Finesse ME+ is designed to meet the most demanding workloads found in today's busy laboratories by being one of the safest, most comfortable, and user-friendly microtomes offered today.

Excellent for routine wax sections and specialized resin work, the Shandon Finesse ME + provides high quality sections without the inconvenience of routine maintenance.

With unmatched versatility, ease-of-use, reliability and consistency of results, the Shandon Finesse ME + has everything you need to make it the perfect fit for your lab.

Sophisticated Components for Simple Handling.

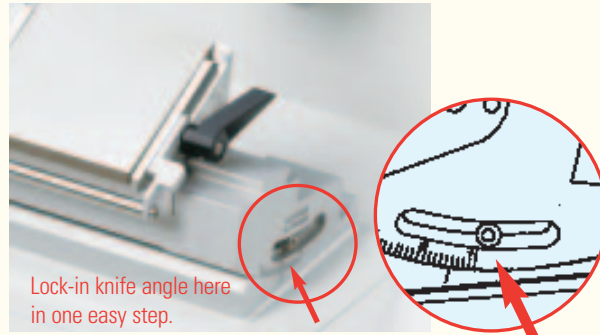
- **New, improved blade holder** – provides greater versatility, improved productivity, and increased stability while sectioning (see details on page 6).
- **Choose set-ups** for standard wax or resin sectioning.
- **Display monitors a range of functions** including cutting speed, section count, section thickness and advance distance.
- **Arrow keys** control specimen advance and rewind.
- **Selectable** retraction feature.
- **Instantly switch** between TRIM and SECTION settings.
- **Independently selectable** trim and section speeds.
- **AUTOLOAD option** automatically resets specimen head to a ready position for quickly changing blocks on high-throughput projects.
- **Emergency Stop** immediately cuts power to the motor.
- **ROCK option:** specimen head advances by a set amount to trim specimens without turning the handwheel through full turns.
- **User selected CUTTING SECTOR control** maximizes throughput by allowing the return stroke to be faster than the optimized cutting stroke.
- **3 cutting modes** include continuous cutting.
- **Choose from 11 languages** for viewing commands.
- **Wide, Curved Arm Rests.**
- **Precision Response, Free-running, Balanced Flywheel.**
- **Operational from Front or Side Positions.**
- **Standby Key** allows the unit to go into "sleep" mode which saves the customized parameters in memory.



The View From Above

Specimen Advance incorporates a unique shaft design which stabilizes the specimen holder through its full extension.

Specimen Orientation Backlight is a cool, green light in the base to assist in aligning the specimen with the knife.



Lock-in knife angle here in one easy step.

Sets Angle

Find The Correct Knife Angle Time After Time

The Knife Angle Position Locator allows the user to precisely select an angle for a disposable or solid knife. Once the angle is set and locked, the holder may be removed for cleaning and replaced at the same angle without further adjustment.

Stable Specimen Advance System

New design incorporates a unique undercarriage support on the drive shaft which stabilizes the specimen holder through its full extension.

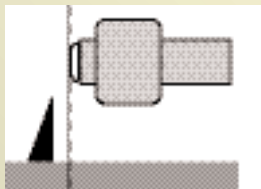
Innovative, Practical Features

Autoload Streamlines Repetitive Jobs

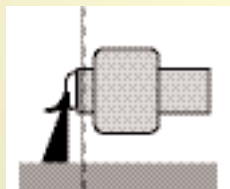
The autoload feature greatly reduces repetitive movements by the operator. With a press of the autoload button, the block quickly advances to a preset trim position without cranking a wheel.

When trimming and sectioning are complete, the operator touches the autoload button to move the specimen head back to the unload position where the operator may safely change to a fresh block.

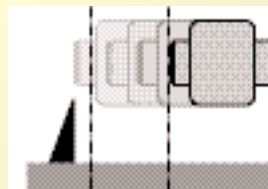
Memory Position



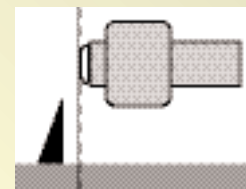
Memory Position



Memory Position



Memory Position



1. Set the "Memory Position" for the AUTOLOAD.

2. Trim and section as usual.

3. Press AUTO to make the specimen head rewind 5 mm.



Fixed Base Uses A Variety of Knife Holders

Stage accepts holders for disposable blades, solid knives and triangular or Ralph glass knives. (See holders on page 6).



Brake and Cutting Action Selector

User may brake at any position on the wheel or select MANUAL cutting action.



Folding Handle

Handle folds down for convenience when operating in automatic mode.



Knife Locking Pin

Secures the blade holder to the fixed knife stage.



Coarse Advance Wheel

Allows the user the option of manually advancing the block to the knife edge.

Motor Speed

Adjusts the speed of the stroke.



Emergency Stop

Immediately cuts power to the motor.

Shandon Finesse ME+ Motorized Electronic Specifications

Description	Order Number	
Shandon Finesse ME+	110-120V, 50/60Hz	A77500016
	220-240V, 50/60Hz	A77500015

A low voltage kit is available separately. See below.

Physical Specifications

Dimensions (H x W x D)

13" x 19" x 23" (33 x 48 x 59 cm)

*Dimensions include Width with handle up and Depth with connectors at rear.

Weight

88 lbs. (40 kg)

Power Requirements

150VA

Shandon Finesse ME+ Features

Total Specimen Advance	35 mm
Cutting Stroke	65 mm
Maximum Advance Speed	2,400 μ m / s
Section Thickness Range	0.5 - 100 μ m
Trim Thickness Range	2 - 100 μ m
Retraction Range	0 - 125 μ m
Section Counter	Standard
Distance Display	Standard
Multi-Lingual Display	Standard
Knife Angle Position Locator	Standard
Specimen Orientation Light	Standard

Included with Product*	Order Number
Fine Orienting Head (see page 8)	77510166
Standard Quick Release Specimen Clamp	0303
Operator Manual (specify language)	A77510300
Top Organizer Tray	77510213
Debris Tray	77510212
Dust Cover	P13912
Footswitch	77510144
Service Record Book	A78410106

Specify Knife Holder at the time of order.

NOT INCLUDED WITH MICROTOME.

See page 6.

* Contents, Packaging, and Quantities of items listed under "Included with Product" are subject to change without prior notice.

Available Accessories

Service Manual	77510162	
Organizer Cold Trays	Ice-Cooled Trays	77510174
	Dry-Cooled Trays	77510175
Low Voltage Adapter Kit	77510179	

Specify at time of order. Must be installed by a qualified technician.

OTHER ACCESSORIES ALSO AVAILABLE ON PAGES 10 AND 11.

Agency Approvals

Designed to meet IEC 61010, CSA, UL, and CE Mark (IVDD compliant).



Debris Tray

Deep, removable tray cleans easily.

Ice-cooled Tray

Dry-cooled Tray



Organizer Cold Trays

The top of the unit holds an ample organizer tray.

Description	Order Number
Ice-Cooled Tray	77510174
Dry-Cooled Tray	77510175

Shandon Finesse® E +

Electronic microtome.



Shandon Finesse E+ Electronic Specifications

Description	Order Number	
Shandon Finesse E+	110-120V, 50/60Hz	A77500022
	220-240V, 50/60Hz	A77500021

A low voltage kit is available separately. See below.

Physical Specifications

Dimensions (H x W x D)

13" x 19" x 23" (33 x 48 x 59 cm)

*Dimensions include Width with handle up and Depth with connectors at rear.

Weight

88 lbs. (40 kg)

Power Requirements

150VA

Shandon Finesse E+ Features

Total Specimen Advance	35 mm
Cutting Stroke	65 mm
Maximum Advance Speed	2,400 μm / s
Section Thickness Range	0.5 - 100 μm
Trim Thickness Range	2 - 100 μm
Retraction Range	0 - 125 μm
Section Counter	Standard
Distance Display	Standard
Multi-Lingual Display	Standard
Knife Angle Position Locator	Standard
Specimen Orientation Light	Standard

Included with Product*

Included with Product*	Order Number
Fine Orienting Head (see page 8)	77510166
Standard Quick Release Specimen Clamp (see page 8)	0303
Operator Manual (specify language)	A77510300
Top Organizer Tray	77510213
Debris Tray	77510212
Dust Cover	P13912
Service Record Book	A78410106

Specify Knife Holder at the time of order.

NOT INCLUDED WITH MICROTOME.

See page 6.

* Contents, Packaging, and Quantities of items listed under "Included with Product" are subject to change without prior notice.

Available Accessories

Service Manual	77510162	
Organizer Cold Trays	Ice-Cooled Trays	77510174
	Dry-Cooled Trays	77510175
Low Voltage Adapter Kit	77510179	

Specify at time of order. Must be installed by a qualified technician.

OTHER ACCESSORIES ALSO AVAILABLE ON PAGES 10 AND 11.

Agency Approvals

Designed to meet IEC 61010, CSA, UL, and CE Mark (IVDD compliant).



Debris Tray

Deep, removable tray cleans easily.

The Shandon Finesse E+ is a precision rotary microtome that provides automated specimen advance with manual cutting. The precision-response, light, balanced flywheel is easy to operate.

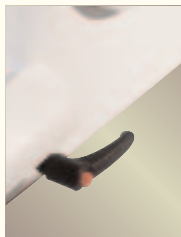
Coarse Advance Wheel allows the user the option of manually advancing the block to the knife edge.

- **Display monitors a range of functions** including cutting speed, section count, section thickness and advance distance.
- **Selectable** retraction feature.
- **Instantly switch** between TRIM and SECTION settings.
- **Debris Tray** is deep and removable for easy cleaning.
- **AUTOLOAD option** automatically resets specimen head to a ready position for quickly changing blocks on high-throughput projects.
- **Knife Locking Pin** secures the blade holder to the fixed knife stage.
- **Emergency Stop** immediately cuts power to the motor.



Coarse Advance Wheel

Allows the user the option of manually advancing the block to the knife edge.



Knife Locking Pin

Secures the blade holder to the fixed knife stage.



Emergency Stop

Immediately cuts power to the motor.

Shandon Finesse® Disposable Blade Holder

Microtome blade holder with built-in features for better sectioning.

Versatile

- Use with **standard cassettes** or Shandon Super Mega™ cassettes.
- **No need to switch** to a different knife holder for larger specimens.
- **Can be used with either** the Shandon Finesse ME+ or the Shandon Finesse E+ microtome.

Increases productivity

- Improved clamping mechanism design significantly reduces need for knife holder maintenance and improves reliability.
- Larger clamp plate allows easier section retrieval.
- For safer operation, **entire top stage moves laterally** – no need to touch or re-clamp blade during sectioning.
- Wear on clamping mechanism **is minimized**.

Increases stability while sectioning

- **Blade is clamped and fully supported along its entire length** – aids in reduction of chatter when sectioning hard tissues.
- **Provides consistent reproducible sections** – use low-profile version with Shandon low-profile disposable blades and high-profile version with Shandon high-profile disposable blades for outstanding results time after time (see page 8).

Description	Order Number
Shandon Finesse High Profile Disposable Blade Holder	A77510275
Shandon Finesse Low Profile Disposable Blade Holder	A77510272

Solid Knife Holder

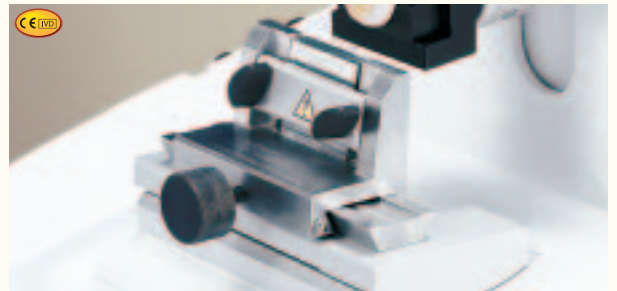


- For Shandon Finesse ME+ and E+.
- Accepts commonly used knives.
- Knife guard covers unused part of knife edge.
- Knife guard can be closed to fully cover entire knife edge.
- Includes knife angle **memory** position indicator.

Description	Order Number
Solid Knife Holder	77510171



Ralph Glass Knife Holder



- For Shandon Finesse ME+ and E+ only.

Description	Order Number
Ralph Glass Knife Holder 1.5" (38 mm); includes 1" (25 mm) insert.	77510168

Triangular Glass Knife Holder



- For Shandon Finesse ME+ and E+ only.

Description	Order Number
Triangular Glass Knife Holder	77510170

Shandon Finesse® 325

Manual rotary microtome.



The Shandon Finesse 325 is a manual rotary microtome for routine paraffin sectioning. It has a lightly balanced flywheel designed to address repetitive stress injury. The Shandon Finesse 325 includes an integral debris tray, organizer storage tray and a resettable section counter. The retraction feature is standard and may be disengaged at the user's request. The unit is supplied with a quick release cassette clamp and "x-y" orientation head as standard. Disposable blades or standard microtome knives may be used with this unit, using the appropriate knife holder.

Shandon Finesse 325 Manual Rotary Specifications

Description	Order Number
Shandon Finesse 325	A78100001

Specifications

Dimensions (H x W x D)

11.4" x 16.1" x 19.7" (29 x 41 x 50 cm)

Weight

88 lbs. (40 kg)

Shandon Finesse 325 Features

Accu-Feed specimen advance is selectable in 1 micron steps from 1 to 30 microns. Specimen tilt / orientation is ± 5 degrees using X-Y micro adjustment.

Included with Product*	Order Number
Fine Orienting Head	0325-105
Standard Quick Release Specimen Clamp (see page 8)	0303
Audible and visual specimen travel alarm/indicator.	Standard
Organizer Tray	A78130004
Debris Tray	A78130003
Dust Cover	AP14325
Microtome Oil	1520/1
Operator Manual (specify language)	A78110100
Service Record Book	A78410106

Specify Knife Holder at the time of order.

NOT INCLUDED WITH MICROTOME.

See info at right.

* Contents, Packaging, and Quantities of items listed under "Included with Product" are subject to change without prior notice.

Available Accessories	Order Number
Service Manual	A78110101
Universal Blade Holder Base and Top Stage	0318
High Profile Blade Holder Base and Top Stage	0322
Low Profile Blade Holder Base and Top Stage	0321
Specimen holders, quick-release cassette holders, and vises as options.	
See page 10.	

Agency Approvals

CE Mark (IVDD compliant).

- **Modern Accu-Feed System** provides high quality reproducible sections throughout the length of specimen travel.
- **Removable deep debris tray** for ease of cleaning.
- **Removable organizer tray** located at the top of the unit for cassette organization and tools.
- **Precision response, free-running flywheel** with ergonomic design.
- **Brake** may be activated at any position of the flywheel.
- **Retraction may be disengaged** at the user's discretion.
- **Supplied with** orientation head, quick-release clamp, microtome oil, dust cover, and operator's manual.

Blade Holders for Finesse 325

Order Blade/Knife Holder separately

Universal

- Accepts standard "C" or "D" profile knife up to 185 mm.
- May be used with standard steel knives or with disposable blade holder. Order No. 40 or 47.



High-Profile

- This holder will accept either standard or heavy-duty high-profile blades, providing a wide range of tissue sectioning.



Low-Profile

- Use with low-profile disposable blades.



Disposable Blades

Low Profile

Description	Special Use
Shandon MX35 Premier + Low Profile Disposable Blade 80 x 8 x 0.25 mm 34° Facet Angle	Sharper edge with increased durability. Provides improved performance for sectioning hard tissues and high-quality thin sections. Tests show 10-20% increase in blade life.
Shandon MX35 Premier Low Profile Disposable Blade 80 x 8 x 0.25 mm 34° Facet Angle	Routine applications. Increased durability.
Shandon MB35 Premier Low Profile Disposable Blade 80 x 8 x 0.25 mm 34° Facet Angle	Routine applications. Has consistent edge sharpness for high quality thin sections.
Shandon MB22 Premier Low Profile Disposable Blade 80 x 8 x 0.25 mm 22° Facet Angle	Use for applications where extremely thin, high-quality sections are required such as renal biopsies and lymph nodes.



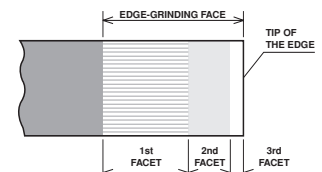
High Profile

Description	Special Use
Shandon HP35 High Profile Disposable Blade with PTFE Coating 75 x 14 x 0.31 mm 34° Facet Angle	Routine applications. Increased durability with easier ribboning.
Shandon HP35n High Profile Disposable Blade without PTFE Coating 75 x 14 x 0.31 mm 34° Facet Angle	Routine applications. Economical.

Structure of a Blade Edge

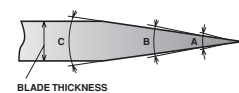
Superior Edge Profile

The shape of the blade edge is optimized to provide excellent sectioning performance, ensuring easier ribboning and improved sharpness.



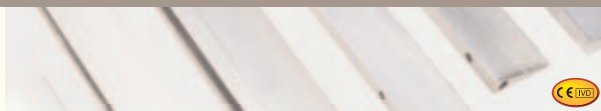
Coating

Coating is optimized to provide durability and easy ribboning.



Description	Pkg/Qty	Order Number
Shandon MX-35 Premier+ Low Profile	50 / Pk.	3052835
Shandon MX-35 Premier Low Profile	50 / Pk.	3051835
Shandon MB-35 Premier Low Profile	50 / Pk.	3050835
Shandon MB-22 Premier Low Profile	50 / Pk.	3050822
Shandon HP-35 Coated High Profile	50 / Pk.	3150734
Shandon HP-35n High Profile	50 / Pk.	3152735

Microtome Knives / Blade Holders



Tungsten Carbide Microtome Knife

- D-profile has tungsten carbide tip for extra strength and support to the cutting edge.

Standard Microtome Knives

- Superior quality surgical steel is thoroughly tempered and individually tested for hardness.
- Round back design is precisely balanced and shaped.

Premium Microtome Knives

- Precision ground for outstanding sectioning and extended cutting life; flat-back design.
- Assured performance through multiple tests.
- All Shandon C-profile and D-profile knives are drilled and tapped in the base for direct attachment to holders for sharpening.
- Four lengths of C-profile knives: 120 mm, 160 mm, 185 mm and 240 mm.
- Two lengths of D-profile knives: 160 mm and 240 mm.

Stainless Steel Microtome Knives

- Ideal for cryostats. Round-back design.
- Replaces carbon steel wherever moisture is a problem to prevent minute oxidation which may occur on ordinary microtome knife edges.
- Resists corrosive action.
- Hardened throughout to the exact temper for the best quality in edge efficiency, and tested for hardness.

Description	Pkg/Qty	Order Number
D-Profile Microtome Knife Tungsten Carbide Tip, Blade Length: 160 mm	Each	5601006
Standard Microtome Knife Round Back, Blade Length: 125 mm	Each	7702
Stainless Steel Back For 125 mm Standard Microtome Knife 7702	Each	77022
Standard Microtome Knife Round Back, Blade Length: 185 mm	Each	7703
Stainless Steel Back For 185 mm Standard Microtome Knife 7703	Each	77023
Standard Microtome Knife Round Back, Blade Length: 250 mm	Each	7704
Stainless Steel Back For 250 mm Standard Microtome Knife 7704	Each	77024
Shandon C-Profile Microtome Knife Flat-back, Blade Length: 120 mm	Each	9992009
Shandon C-Profile Microtome Knife Flat-back, Blade Length: 185 mm	Each	9992011
Shandon C-Profile Microtome Knife Flat-back, 160 x 34 x 10 mm	Each	2222003
Shandon C-Profile Microtome Knife Flat-back, 240 x 33 x 13 mm	Each	2222005
Shandon D-Profile Microtome Knife Flat-back, 240 x 33 x 14 mm	Each	2222006
Shandon D-Profile Microtome Knife Flat-back, 160 x 34 x 10 mm	Each	2222004
Stainless Steel Microtome Knife Round-back, Blade Length: 125 mm	Each	7619
Stainless Steel Microtome Knife Round-back, Blade Length: 185 mm	Each	7719

Stainless Steel

Disposable Blade Holder



- All stainless steel construction.
- Holds most standard high- and low-profile blades.
- Fits most standard microtomes and cryostats.

Description	Order Number
Stainless Steel Disposable Blade Holder, 6.7" (170 mm)	40

Spring-Loaded

Disposable Blade Holder



- Spring-loaded clamp enables easy knife changes.
- Shaped like standard microtome knife to fit most standard microtomes and cryostats.
- Holds most heavy-duty blades, including the Shandon Premium Heavy-Duty blades (see below).

Description	Order Number
Spring-Loaded Disposable Blade Holder, 5.1" (130 mm)	47

Shandon Standard High Profile Disposable Blades



Description	Pkg/Qty	Order Number
Shandon Standard High Profile	100 / Pk. x 5	49

Shandon Premium High Profile Disposable Blades



Description	Pkg/Qty	Order Number
Shandon Premium High Profile	50 / Pk.	1001259
Shandon Premium High Profile with PTFE	50 / Pk.	1001593
Shandon Premium Heavy-Duty High Profile	30 / Pk.	1702

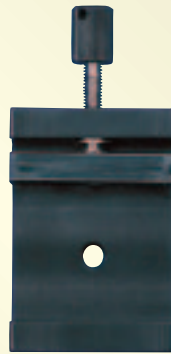
Microtome Accessories



60 x 55 Vise

(77510167)

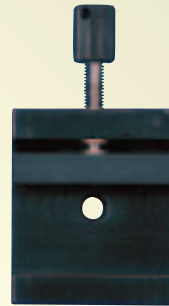
Max Open: 55
Finesse ME and E only
 Fits Knife Holders
 77510171 → 77510173



50 x 45 Vise

(0201)

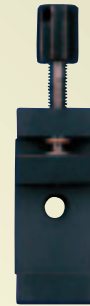
Max Open: 45
 Min Open: 28



50 x 30 Vise

(0214)

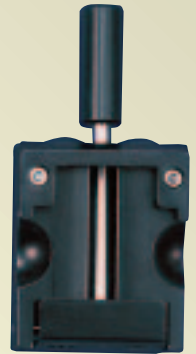
Max Open: 30
 Min Open: 13



25 x 30 Vise

(0313)

Max Open: 30
 Min Open: 16



Standard Quick Release Clamp +

(0303)

+ Included with Unit



10 mm Spacer Bar

(0215)



Large V Spacer

(0216)



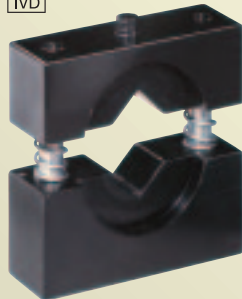
Small V Spacer

(0220)



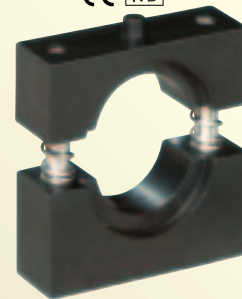
Thin Foil Specimen Holder

(0223)



JB4 Resin Clamp

(77510178)

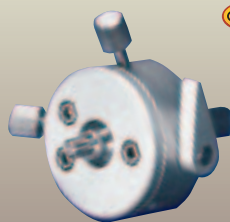


EBH-2 Resin Clamp

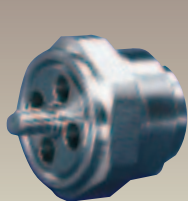
(A77510181)



Shandon Specimen Orienting Heads



The **Fine Orienting Head +** is included with the Shandon Finesse ME+ and E+. It allows x-y orientation of the specimen.



The **Fixed Orienting Head** Provides rigid support when sectioning hard tissues and resins. (Sold separately).

Description	Order Number
Shandon Fixed Orienting Head (Finesse ME+ and E+ Only)	A77510164
Shandon Fine Orienting Head (Finesse ME+ and E+ Only) +	A77510166
+ Item 77510166 is included with microtome.	

Description	Order Number
Standard Quick Release Specimen Clamp+	0303
Vise	60 x 55 mm (Finesse ME and E Only) 77510167
Standard Vise	50 x 45 mm 0201
	50 x 30 mm 0214
	25 x 30 mm 0313

+ Item 0303 is included with all microtomes.

Description	Order Number
10 mm Spacer Bar	10 x 50 mm 0215
V Spacer,	Large Fits 0201 and 0214 0216
	Small Fits 0201 and 0214 0220
Thin Foil Specimen Holder	Fits 0214 and 0313 0223
JB4 Resin Clamp	Use with 0201 77510178
EBH-2 Resin Clamp	Use with 0201 A77510181

Vise Accessories sold separately. Not included with microtome.



Shandon Paraffin Section Flotation Bath

- Holds water at a constant temperature to flatten wax or resin sections prior to lifting them onto a microscope slide.
- Controls have been recessed to provide the user with an added measure of safety.
- Deep tapered bowl is made from stainless steel to offer maximum resistance against corrosion.
- Both the bowl and the upper casing have a matte-black PTFE coating providing visual contrast against wax sections.

Description	Order Number
Shandon Paraffin Section Flotation Bath	110-120V 50/60Hz 3120070
	220-240V 50/60Hz 3120058

Shandon Circular Paraffin Section Flotation Bath

- Compact unit keeps water at a constant temperature to flatten wax or resin sections prior to lifting them onto a microscope slide.
- The bath is made from aluminum with an anodized matte-black finish. It has a wide rim with ample space for slide drying.

Description	Order Number
Shandon Circular Paraffin Section Flotation Bath	110-120V 50/60Hz 3120071
	220-240V 50/60Hz 3120059

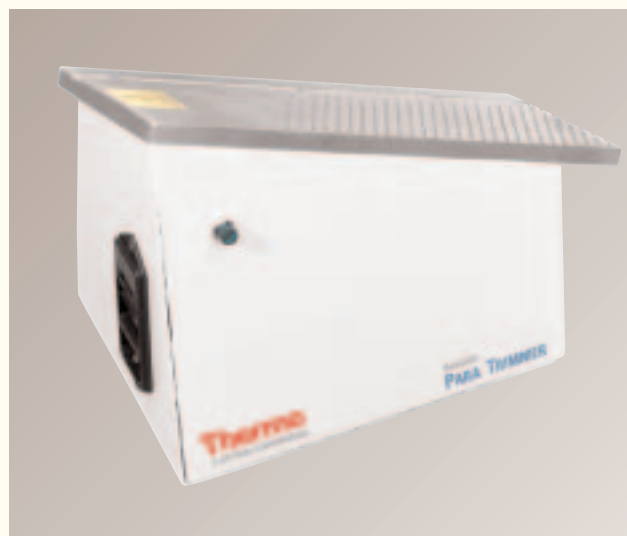
Shandon PARA TRIMMER®

The Shandon PARA TRIMMER is designed to remove excess wax from the outside of a tissue cassette after embedding by sliding the outside of the block across the heated surface.

Paraffin should be removed to properly seat the block in the quick-release clamp or vise to achieve the best section quality from your microtome.

- Heated surface with ridges.
- Multiple blocks may be passed across the surface at one time.
- Patented, compact, dual voltage unit.

Description	Order Number
Shandon PARA TRIMMER	110-240V, 50/60Hz B3120205



Technical Services

Rest easy with Thermo Electron Service.

Cold Point Light Source

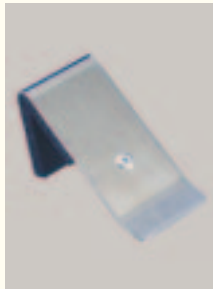


- Directs two powerful beams of light to the specimen.
- Fiber optic lights do not affect specimen temperature.
- Gooseneck shafts provide maximum flexibility.

Description		Order Number
Cold Point Light Source	110V	77510262
	230V Euro Version	77510252
	230V U.K. Version	77510261

Shandon Microtome

Magnetic Knife Edge Guard



- Heavy-gauge, polished stainless steel protector fits any microtome knife.
- Interior fitted with sponge rubber to protect the microtome knife edge.
- Magnet fitted to front section holds the protector securely in place.

Description	Pkg/Qty	Order Number
Shandon Magnetic Knife Edge Guard 1" x 2" (25 x 51 mm)	Each	57

Shandon Anti-Static Spray



- Neutralizes and inhibits accumulation of static electricity.
- Use to spray the sectioning area between the microtome knife and the embedded tissue block.
- Available in 16 oz. (450 ml) spray.

Description	Pkg/Qty	Order Number
Shandon Anti-Static Spray	Each	259

Downtime equals wasted time.



With today's busy laboratory environments, where resources are constrained, workloads continue to increase, funds are limited, and productivity is the key to success, having to deal with an instrument that is not working as hard as you are – or not at all – is simply not acceptable.

At Thermo Electron Anatomical Pathology, we understand how important it is to keep your lab up and running. No matter what your service requirements are, Thermo AP has a solution that can help keep you working at peak efficiency.

- Flexible programs based on your workflow and particular laboratory needs.
- Only original factory parts are used for repair and maintenance.
- Our factory-trained technicians are conveniently located throughout the country and have years of experience servicing Thermo AP equipment.
- Standard 24/7/365 technical phone support (U.S. Only).
- Technical hotline service available.

Our Gold Plan* provides maximum coverage and priority response. It covers all costs including labor, travel time, expenses, and parts. An annual preventative maintenance inspection is performed by a factory certified service engineer to provide continued optimal performance of your Thermo instrument.

Our Silver Plan* offers the same coverage as our standard manufacturer's warranty. All repair costs are included and pre-budgeted so you do not experience the surprise of unplanned expenses.

Our Bronze Plan* is a prevention plan. Once a year, one of our factory certified service engineers will perform a preventative maintenance inspection on your instrument to ensure that your instrument is working properly and meeting factory standard specifications. Service includes instrument lubrication, cleaning, calibration, and performance checks, as applicable.

* Service Plan Coverage varies in different countries.