

Spectrophotometer

Spectrophotometer

SP-V1000/SP-UV1000/SP-V1100/
SP-UV1100

The spectrophotometer is an indispensable instrument routinely used in colleges, universities and research institutes for quantitative analysis in fields including biotechnology and quality control of new material developed. V-Series provides high resolution, high performance and excellent stability.



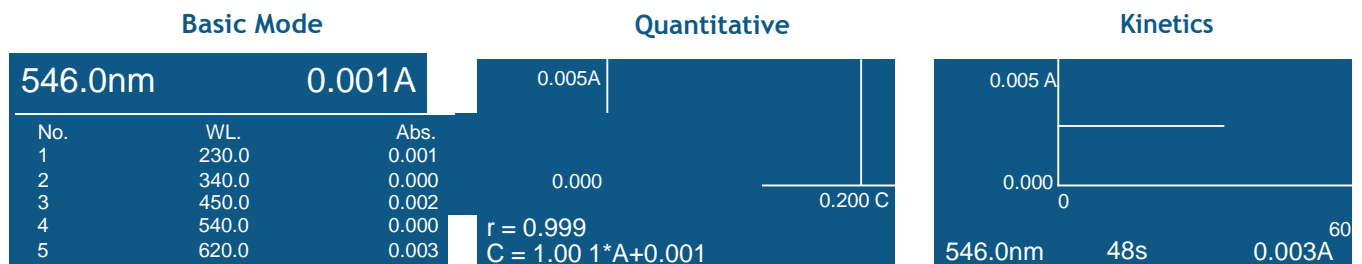
Features

- **User Friendly Operation and Information Rich LCD Display:** The large 128 x 64 dots, backlit LCD screen with adjustable brightness control displays a large array of data also in graphical format.
- **On-Board Data Storage:** The System can save the test results, up to 200 groups of data and 200 standard curves in the RAM memory.
- Data can be restored after a sudden power failure.
- **Auto setting wavelength:** To set wavelength automatically to calibrate the system through arrow keys to avoid operation errors.
- **Automatic Switching:** Tungsten & Deuterium lamps switching is automatic. Selectable from a wavelength range of 190 to 1100nm.
- **PC control through application software:** The spectrophotometer is fully equipped and capable of executing all functions in stand-alone mode.

Note: The advanced application software 'Wave Professional' (available at extra cost) provides computer control for the spectrophotometer (through built-in USB port), apart from other functions such as spectrum scan, Time scan (kinetics), multiwavelength scanning & Nucleic Acid/ Protein measurement. (SP-V1100/ SP-UV1100)

- **Large sample compartment:** To accommodate 5-100mm path length cuvettes with optional holders.

A variety of optional accessories are available.





Model	SP-V1000	SP-UV1000	SP-V1100	SP-UV1100
Optical System	Single Beam	Single Beam	Single Beam	Single Beam
Light Source	Tungsten lamp	Tungsten lamp & Deuterium lamp	Tungsten lamp	Tungsten lamp & Deuterium lamp
Spectral Bandwidth	4.0nm	4.0nm	2.0nm	2.0nm
Wavelength Range	325-1000nm	200-1000nm	320-1100nm	190-1100nm
Wavelength Accuracy	±2nm	±2nm	±0.5nm	±0.5nm
Wavelength Repeatability	≤1nm	≤1nm	≤0.3nm	≤0.3nm
Photometric Range	-0.3 - 3.0 A, 0 - 200%T	-0.3-3.0A, 0-200%T	-0.3-3.0A, 0-200%T	-0.3 - 3.0 A, 0 - 200%T
Photometric Accuracy	±0.003 A @ 0.5 A, ±0.006 A @ 1.0 A, ±0.5%T @ 100%T	±0.003 A @ 0.5 A, ±0.006 A @ 1.0 A, ±0.5%T @ 100%T	±0.002 A @ 0.5 A, ±0.004 A @ 1.0 A, ±0.3%T @ 100%T	±0.002 A @ 0.5 A, ±0.004 A @ 1.0 A, ±0.3%T @ 100%T
Photometric Repeatability	≤0.0015 A @ 0.5 A, ≤0.003 A @ 1.0 A, ≤0.25%T @ 100%T	≤0.0015 A @ 0.5 A, ≤0.003 A @ 1.0 A, ≤0.25%T @ 100%T	≤0.001 A @ 0.5 A, ≤0.002 A @ 1.0 A, ≤0.15%T @ 100%T	≤0.001 A @ 0.5 A, ≤0.002 A @ 1.0 A, ≤0.15%T @ 100%T
Stability	≤0.002 A/h @ 500 nm (after preheat 2 hours)	≤0.002 A/h @ 500 nm (after preheat 2 hours)	≤0.002 A/h @ 500 nm (after preheat 2 hours)	≤0.002 A/h @ 500 nm (after preheat 2 hours)
Stray Light	≤0.2%T @ 360nm	≤0.2%T @ 220&360nm	≤0.05%T @ 360nm	≤0.05%T @ 220 & 360nm
Sample Compartment	4-position, 10mm pathlength cuvette	4-position, 10mm pathlength cuvette	4-position, 10mm pathlength cuvette	4-position, 10mm pathlength cuvette
Display	LCD	LCD	LCD	LCD
Output	USB Port & Parallel Port (Printer)	USB Port & Parallel Port (Printer)	USB Port & Parallel Port (Printer)	USB Port & Parallel Port (Printer)
Power	110/220VAC, 50/60Hz, 80W	110/220VAC, 50/60Hz, 120W	110/220VAC, 50/60Hz, 80W	110/220VAC, 50/60Hz, 120W
Dimension(L×W×H)	490×360×210mm	490×360×210mm	490×360×210mm	490×360×210mm
Weight	10kg	12kg	10kg	12kg

Spectrophotometer | Accessories

ACCESSORIES



Cat. No. 18900337
Micro-Micro

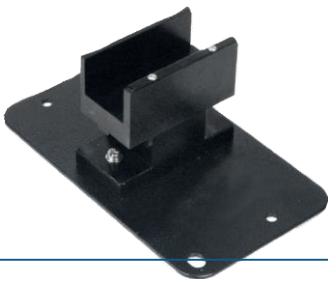


Cat. No. 18900340
8-position auto cell changer
(for SP-V1100&SP-UV1100)



Cat. No. 18900331
4-cell holder for 10mm squ.cuvette

Cat. No. 18900332
4-cell holder for 10mm
to 50mm squ. cuvette

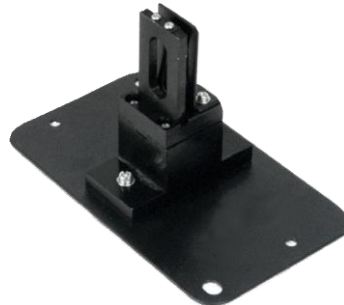
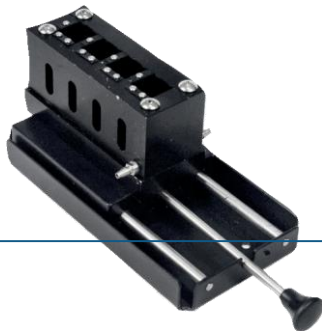


Cat. No. 18900333
4-cell holder for up to
100mm squ.cuvette

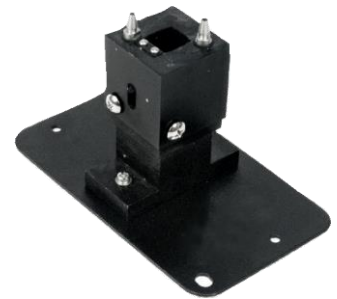


Cat. No. 18900338
Test tube holder(ø8-ø22mm)

Cat. No. 18900334
cylindrical cell holder(ø16mm)



Cat. No. 18900339
solid sample holder
(ø1.5-3mmø1 position)



Cat. No. 18900335
10mm water-jacketed 1 cell holder
(for SP-V1100 & SP-UV1100)

Cat. No. 18900336
10mm water-jacketed 4-cell holder
(for SP-V1100 & SP-UV1100)



Square cuvettes glass/quartz
1-5mm/10-100mm



Cat. No. 18900341
12V20W halogen lamp



Cat. No. 18900342
Milas deuterium lamp,10V,300mA, 30W
(for SP-UV1000&SP-UV1100)