

DV-II+Pro Viscometer

our most versatile continuous sensing viscometer



Displayed Info:

- Viscosity (cP or mPa•s)
- Temperature (°C or °F)
- Shear Rate/Stress

Customizable Options

Scroll Keys

for Simple Selection of Speed & Spindle

Built-in RTD Temperature

Bi-directional RS-232 PC interface provides optional computer control and automatic data gathering capability

Complete computer control with optional Rheocalc software

Download custom test programs with DV Loader software (included with instrument)

54 selectable speeds provide superior range of viscosity/shear rate measurements

Auto Range Showing
-Full Scale Range (FSR) at 100%
-Maximum viscosity measured

Accuracy: $\pm 1.0\%$ of range

Repeatability: $\pm 0.2\%$

VISCOSITY RANGE
cP(mPa•s)

SPEEDS

MODEL	Min.	Max.	RPM	Number of Increments
LVDV-II+P	1†	6M	.01-200	54
RVDV-II+P	100††	40M	.01-200	54
HADV-II+P	200††	80M	.01-200	54
II+P	800††	320M	.01-200	54

† 1 cP achieved with UL Adapter accessory. 15 cP on LV with standard spindles.
†† Minimum viscosity is achieved with optional RV/HA/HB-1 spindle.
M = 1 million cP = Centipoise mPa•s = Millipascal/seconds

BROOKFIELD

What's Included?

Instrument

- spindles (RV/HA/HB) (p39)
- or 4 spindles (LV) (p39)

DV Loader software E

RTD Temperature Probe

Spindle Guard Leg*

Lab Stand (Model S)

Carrying Case

*Not applicable to HA or HB versions

Optional Accessories

Rheocalc32 Software E

Wingather Software E

NEW Ball Bearing Suspension (RV/HA/HB)

(p3) Viscosity Standards (p44)

RV/HA/HB-1 Spindle (p39)

Quick Action Lab Stand (p3)

Temperature Bath (p2□)

Small Sample Adapter (p32)

UL Adapter (p34)

Thermosel (p30)

Helipath Stand with T-bar Spindles (p3□)

Spiral Adapter (p38)

DIN Adapter (p38)

Quick Connect/Extension Links (p43)

Vane Spindles (p3□ & 42)



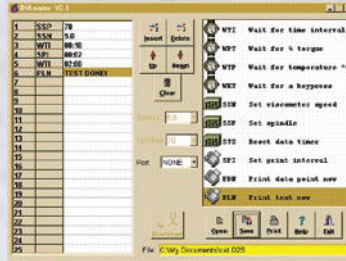
DV-II+Pro CP

The DV-II+Pro is available in a Wells/Brookfield Cone & Plate

DV Loader Software Included

Create custom tests using your PC

DV Loader allows users to create repeatable custom tests with choices of parameters for speed, test duration, etc. to be downloaded from a PC to a DV-II+ Pro Viscometer. Disconnect the DV-II+Pro from the PC for secure, user-defined test methods.



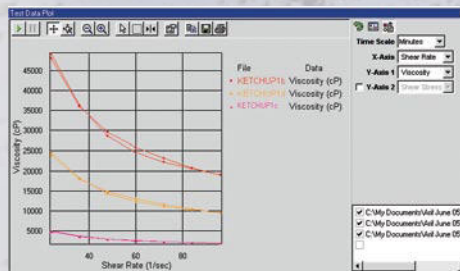
Connect DV-II+Pro to a PC to create a custom test program on your PC and then download test parameters to your viscometer

Rheocalc32 Software Optional

Get total control of your instrument and test parameters

Automatically control and collect data with Rheocalc32 and a dedicated computer. Rheocalc32 can analyze data, generate multiple plot overlays, print tabular data, run math models and perform other time-saving routines. Data can be saved in the program or exported to Excel.

- Controls test parameters with powerful scripting capabilities
- NEW wizard for self-guiding creation of test programs
- Looping functions for repetitive tasks
- Automates data collection to save time
- Math modeling for yield stress calculations, plastic index
- Plot up to five data sets for comparisons



Wingather Software Optional

Data collection software to collect, analyze and record test data

Wingather software provides an easy way to gather data and plot graphs while creating permanent test records. Data can be saved in the program or exported to Excel.

- Automates data collection to save time
- Reduces operator error
- Math modeling for yield stress calculations, plastic index
- Plot up to five data sets for comparisons

